

7



Find the mother coyote with her pups in the den below.

How does a coyote build her den?

- a. Digging in soft soil
- b. Enlarging the holes of other burrowing animals
- c. Burrowing in caves
- d. Digging a series of tunnels like prairie dogs

8

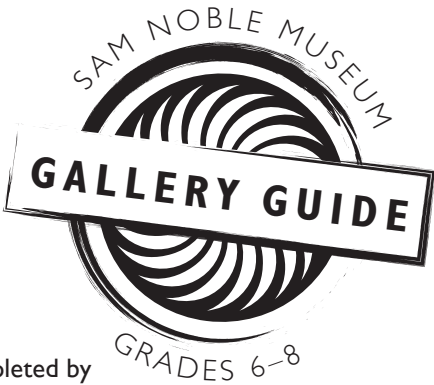
Find the sign marking the **short grass prairie**. This area is home to the second fastest land animal in the world; the pronghorn. Explain why the pronghorn is so fast.

9

Many plants on the **short grass prairie** have defenses, like sharp spines to protect them from being eaten. This is especially true for plants that hold a lot of water since water is hard to get in this dry environment. List three plants that use spines as a defense.

Hint: Use the touchscreens for help.

HALL OF NATURAL WONDERS



Welcome to the Sam Noble Museum!

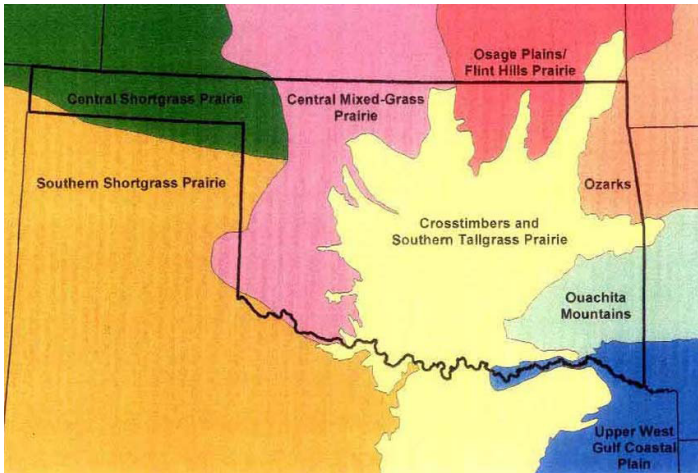
These gallery activities are designed to be completed by a student or group of students, with the help of an adult.

Gallery Guides are available for each of the museum's three permanent galleries.

The Hall of Natural Wonders is your guide to the plants and animals of Oklahoma. Each section of this gallery features different ecosystems in the state including woodlands, caves, mixed grass prairie and short grass prairie. Each of these areas are home to different plants and animals.

In the Ozark Highlands, you will explore the diversity of life in the upland stream and discover the different species that live in the oak hickory forest. Then, head to the limestone cave which features the 22 species of bat that live in Oklahoma. Next, find the bison in the mixed grass prairie and learn about how these giant animals have adapted to life on the prairie. Finally, stop by the short grass prairie to learn about Black Mesa and the wildlife that live in the driest part of our state.

Use the map below to learn where in the state each ecosystem is found!

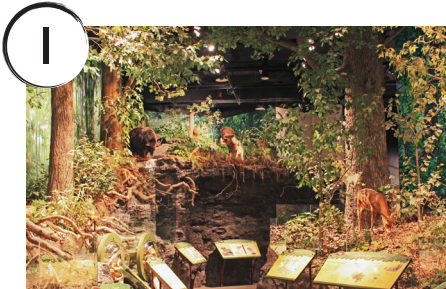


Sam Noble Museum 2401 Chautauqua Ave., Norman, OK 73072-7029
THE UNIVERSITY OF OKLAHOMA. (405) 325-4712 samnoblemuseum.ou.edu

The University of Oklahoma is an equal opportunity institution. www.ou.edu/eoo.
For accommodations on the basis of disability, please call (405) 325-4712.



1. Begin at the Hall of Natural Wonders located on the second floor. The gallery entrance has pictures of plants and animals covering the wall.
2. Explore the gallery to find the answers to the questions below.
3. Start your journey at the sign marking the oak hickory forest in the Ozark highlands.



How many different species of **warbler** birds can the oak hickory forest support?

How can so many warblers live in the forest without competing for **resources** (food, shelter, etc.)?



This snake makes its home in the leaf litter of the forest floor. It is often found in forests near water. It gets its name from the light colored spots on its body. What is it?



Stonerollers are fish that live in streams in the Ozark highlands. What would happen if stonerollers were no longer in the **ecosystem**?

- | | |
|--|--|
| a. Numbers of invertebrates would decrease | c. Silt may increase on the stream bed |
| b. Algae may cover stream beds | d. All of the above |

Explore the limestone cave and find the information on dark zone animals. Dark zone animals, like the grotto salamander, have adapted to living in the dark by developing enhanced non-visual senses. Give one example of this **adaptation**.



Find the bison in the mixed grass prairie. Bison may appear to be bulky and slow, but bison can run up to _____ miles per hour. They can also jump up to six feet high!

List one example of **mutualism** that you can find in the mixed grass prairie. Mutualism is a relationship in which two organisms interact with and help each other without either organism being harmed.

Hint: Read the text panels for clues.
