

Paleobotany, Micropaleontology, & Mineralogy Collection Sam Noble Oklahoma Museum of Natural History

Photography Supplies

The following list is a general list of types of supplies in use or available to be used (it is not intended to be a complete detailed account of all equipment); if you need further information please consult the Collection Manager.

- Computer with Keyboard & Mouse (used to store digital photos & run software to control camera)
- Task Lamp/Desk Lamp (used when no Photo Lights are on, especially if overhead lights are off)
- Canon EOS D10 camera [6.3-megapixel – JPEG (EXIF 2.2)]



(Photo of Canon EOS D10 Camera)

- Canon Remote Capture (used to run camera via a computer)
- Canon Angle Finder C including Adapter Ec-C, Ed-C (used as a side view/extension tube for camera)



(Photo of Canon Angle Finder C)

Photography Supplies for Procedures

- Lens [Canon EF mount, not EF-S mount]
 - Sigma 50 mm 1:2.8 DG Macro Lens



(Photo of Sigma 50 mm Macro Lens)

- Canon Zoom Lens EF 24-70mm 1:2.8L USM*



(Photo of Canon 24-70 mm Macro Lens)

[*Arrangements must be made to borrow from Ethnology Department]

Photography Supplies for Procedures

- Filters

- Bower 55 mm UV Filter [to fit Sigma 50 mm Macro Lens] (used to protect lens/help with glare)



(Photo of UV Filter)

- Bower 55 mm Polarizing Filter [to fit Sigma 50 mm Macro Lens] (used to help with extreme glare)



(Photo of Polarizing Filter)

- Canon 77mm UV Haze Filter [to fit Canon 24-70mm Lens]* (used to protect lens/help with glare)



(Photo of UV Filter)

[*Arrangements must be made to borrow from Ethnology Department]

- 55mm Len Hood [to fit Sigma 50 mm Macro Lens]



(Photo of Lens Hood)

Photography Supplies for Procedures

- Beseler CS-14 Copy Stand (used to support camera and lights)
- Beseler CLA Light Arms x2
- Beseler CL-600 Copy Lights with R50, 5" Reflectors x4



(Photo of copy stand with arms holding 4 lights with reflectors)
[Replacement lights, etc. available from B&H Photo]

- GE or Osram-Sylvania Frosted Photoflood light bulbs [ECA, 250W, 3200° K] (used to help set white balance)



(Photo of photoflood light bulbs)
[Purchased from Bulbman.com or B&H Photo]

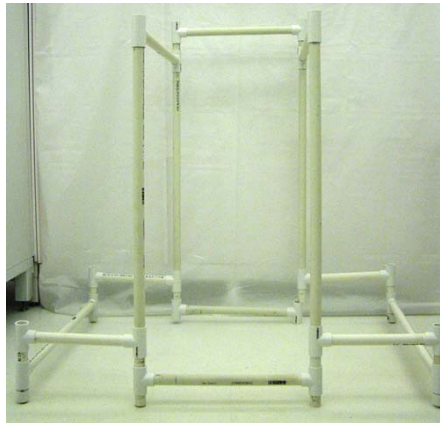
- White Rip-stop Nylon Fabric (used for diffusion of light on left side)



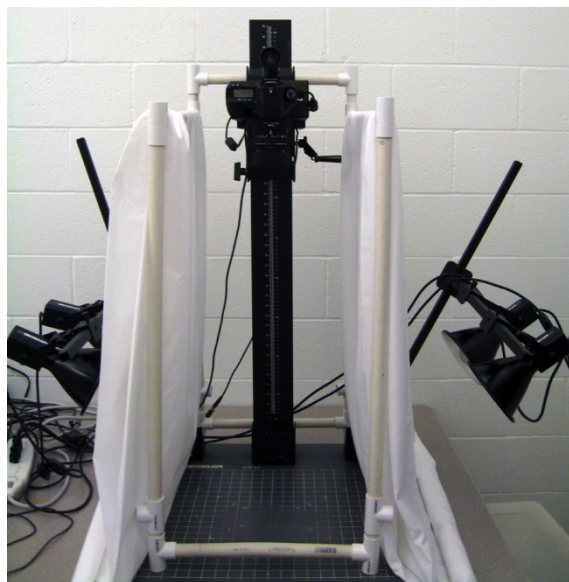
(Photo of diffusion material)
[Fabric from Hancock Fabrics]

Photography Supplies for Procedures

- PVC Pipe & T's (used to support/hold diffusion material)



(Photo of PVC stand to hold diffusion material)



(Photo of PVC holding diffusion material)

- Power Strip with Switch (used to control all lights at once)
- Coal Kona® Cotton Fabric (used for background - fossils)



(Photo of gray fabric for background for fossil photos)
[Fabric from Hancock Fabrics]

Photography Supplies for Procedures

- Poly-Pellets®

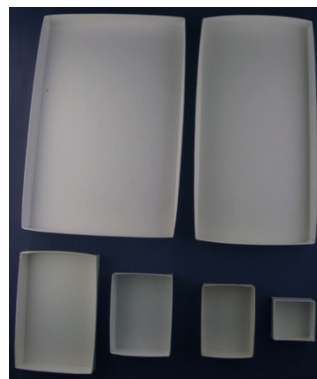
[See photo below of Zip top Bags below]

- Zip Top Bag – Various sizes (used to hold Poly-Pellets®)



(Photo of zip top bags sizes found most useful containing Poly-Pellets®)

- Specimen Boxes – Various sizes



(Photo of specimen boxes sizes found most useful)

- Ethafoam Scraps – Various sized



(Photo of some of the ethafoam scraps and shapes found most useful)

- Dental Wax

Photography Supplies for Procedures

- Brushes – various sizes (to brush debris from background, as needed)



(Photo of assorted brushes often found useful)

- High Pressure Blower with one-way valve (to gently blow debris from background or stable specimens, as needed)

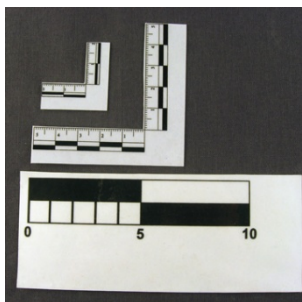


(Photo of Blower)

[Purchased from Gaylord Bros., Inc.]

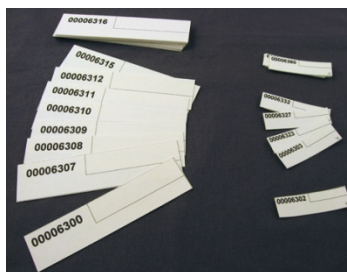
- Sticky notes (used to temporarily mark completed boxes)
- Vacuum (for periodic cleaning up of debris around copy stand)
- Cardstock (to make specimen numbers & scale bars)

- Scale Bars (2 cm, 5cm, 10 cm)



(Photo of SNOMNH Standard Scale Bars)

- Cardstock Specimen Numbers (2 cm & 5cm)



(Photo showing examples of some 2cm & 5cm SNOMNH Cardstock Specimen Numbers)
[The Collection uses bold 20-point Arial font to type the numbers]

- Laminate Pouches & Laminating Machine (to laminate cardstock scale bars for longer durability)

Photography Supplies for Procedures

- Photo Log

Photo Log – SNOMNH Paleobotany & Micropaleontology

Date: (mm/dd/yyyy)

Digital Image Filename (Pbot_#####.jpg)	OPC Specimen Number (numbers following dash)	Which Side of Specimen? (Circle one)	Identification (whatever specified or No ID) <small>(circle "none" option, but not "unnamed")</small>	Storage Location		Photographer(s) Initials	Special Settings (approved abbreviations)	Additional Notes
				Case/Shelving Number	Drawer/Shelf Number			
Pbot_0000	0000	<input type="radio"/> Obverse <input type="radio"/> Other: specify in Notes						
Pbot_0000	0000	<input type="radio"/> Obverse <input type="radio"/> Reverse <input type="radio"/> Other: specify in Notes						
Pbot_0000	0000	<input type="radio"/> Obverse <input type="radio"/> Reverse <input type="radio"/> Other: specify in Notes						
Pbot_0000	0000	<input type="radio"/> Obverse <input type="radio"/> Reverse <input type="radio"/> Other: specify in Notes						
Pbot_0000	0000	<input type="radio"/> Obverse <input type="radio"/> Reverse <input type="radio"/> Other: specify in Notes						
Pbot_0000	0000	<input type="radio"/> Obverse <input type="radio"/> Reverse <input type="radio"/> Other: specify in Notes						
Pbot_0000	0000	<input type="radio"/> Obverse <input type="radio"/> Reverse <input type="radio"/> Other: specify in Notes						
Pbot_0000	0000	<input type="radio"/> Obverse <input type="radio"/> Reverse <input type="radio"/> Other: specify in Notes						
Pbot_0000	0000	<input type="radio"/> Obverse <input type="radio"/> Reverse <input type="radio"/> Other: specify in Notes						
Pbot_0000	0000	<input type="radio"/> Obverse <input type="radio"/> Reverse <input type="radio"/> Other: specify in Notes						
Pbot_0000	0000	<input type="radio"/> Obverse <input type="radio"/> Reverse <input type="radio"/> Other: specify in Notes						

Page: _____

(Example of a SNOMNH Photo Log Page)

[Additional pages can be printed on legal paper from Photo_Log.pdf or Photo_Slides_MF_Slides_Log.xls]

- Photo Checklist

Photo Checklist – SNOMNH Paleobotany & Micropaleontology

OPC Specimen Number	Electronic Label	Specimen Photographed	Date Photographed		Notes
			mm/dd/yyyy	mm/dd/yyyy	

(Example of a SNOMNH Photo Checklist Page)

[Additional pages can be printed on letter paper from Photo_Checklist.pdf or Photo_Checklist.xls]