

IN THIS ISSUE

Lead Stories	1-2
Special Announcements	2
Fast Facts	2
New Acquisitions	2

Dear Colleagues & Friends,

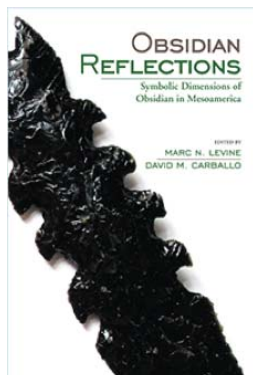


It's been a busy and rewarding year at the Sam Noble Museum. We continue to make progress with our various collections management initiatives, which you can read more about herein. None of this would be possible without the diligence

and hard work of our more than two-dozen volunteers, interns, and graduate research assistants. We are grateful for your work. I also want to thank our collections assistant Alyssa Giles, who will wrap up our IMLS-funded collections work on Spiro Mound material this summer. To all of you, may your summers be filled with cheer, good friends, and ARCHAEOLOGY—of course!

All Best,

Marc Levine, Asst. Curator of Archaeology



Marc Levine and David Carballo's (Boston University) edited volume, "Obsidian Reflections", was published this past September by the University Press of Colorado.

LEAD STORIES

Army Veterans Curation Program

The archaeology department is proud to be participating in the [Veterans Curation Program \(VCP\)](#), which employs vets to process historic and prehistoric archaeological collections. The program aims to provide vets with skills that will make them more competitive in the job market. About 100 boxes of artifacts recovered on US Army Corps of Engineering property was sent from the Sam Noble Museum to St. Louis for this important work.

Introducing... the "Don Wyckoff Lithic Source Collection"



In February, the archaeology department honored Emeritus Curator Don Wyckoff Ph.D, by dedicating the museum's lithic source collection in his name. As most know, Wyckoff served as curator of archaeology from 1996-2011, during which time he conducted research throughout Oklahoma and built the lithic source collection. This collection includes a diversity of raw material for making stone tools from throughout the state and serves as an invaluable resource to researchers today.

New Museum Website!

Please visit the museum's snazzy new website, including our updated [archaeology webpage](#). One of the best features? All Sam Noble Museum archaeology publications are now available [free for download](#).



New archaeology webpage.

SPECIAL ANNOUNCEMENTS



Congratulations to Jenna Domeischel! She graduated with her Master's of Arts in December and is now museum curator at the Blackwater Draw Museum, Eastern New Mexico University.

Ryan Weaver was accepted to the anthropology graduate program at UC Denver.

Emily Warner and Caitlin Doepfner will graduate from OU with a Bachelor of Arts in anthropology this May.

Bill Ankele and Meghan Forney presented their research at the Society for American Archaeology meeting. Shane Bess also presented a paper at the Caddo Conference.

Chelsea Ellis defended her Master of Arts thesis, which focused on skeletal material from our museum's collections.

Susie Fishman-Armstrong received the 2014 Mana-Terry Dowd LLC Scholarship, from the Registrar's Committee of the Mountain Plains Museum Association.

Alyssa Giles and Luigi Polvani were married in April.

Ronnie Grinberg and Marc Levine became parents with the birth of daughter Paloma Yael Levine.

Professor Susan Vehik will retire from OU anthropology after more than 3 decades of service. Good luck Susan!

FAST FACTS

- 22 volunteers worked 2,743 hours since August 2014.
- 85,339 artifacts cataloged and 22 collections accessioned.
- Over 333,319 artifacts have been inventoried.

(Lead Stories cont.)

Visit to Spiro Mound Excavations

Last July, the archaeology department staff visited Spiro Mounds to see OU's field school excavations. Already home to one of the largest collections of artifacts from Spiro, the museum will add to that number when these artifacts eventually join the collection.

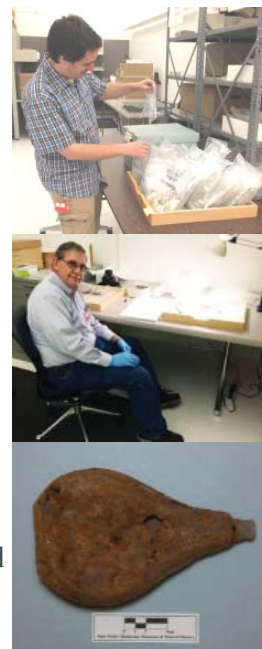


Alyssa Giles and Susie Fishman-Armstrong at the Spiro Mounds Archaeological Center (left). OU Field school at Spiro (right).

NEW ACQUISITIONS

New Home for Fort Sill Collections

Fort Sill, established in 1869 near Lawton, Oklahoma, has been home to ancestral Native American peoples, 19th century homesteaders, and 20th century Apache prisoners of war. Today the fort remains one of the only active army posts in operation since the time of the Indian Wars. Over the years, archaeological projects have recovered thousands of artifacts revealing Fort Sill's fascinating history. The Fort Sill curation facility was recently closed and the artifact collection transferred to the Sam Noble Museum.



Top - Shane Bess; Middle- Bill Luker; Bottom- Canteen from Fort Sill (A/2014/20)

Cedric H. Marks Figurine Collection

The archaeology department recently accessioned a collection of six ceramic figurines from Mexico. The figurines are from Michoacan and the basin of Mexico.



Figurines from the Cedric H. Marks Mesoamerican Figurine Collection (A/2008/006)